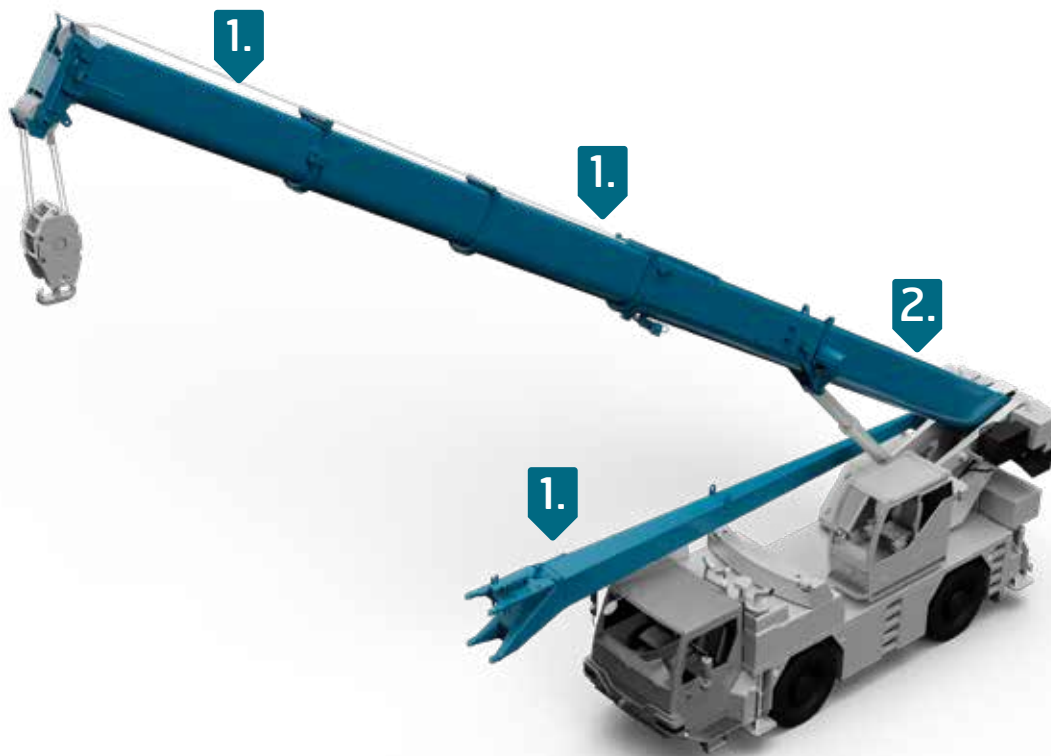


MOBILE CRANES

Reducing dead weight in combination with high-strength makes high strength steel perfect for both lattice and hydraulic booms across a wide range of mobile cranes. You'll find Strenx® steels in yield strengths up to 1300 MPa helping cranes to lift higher and farther.

Mobile cranes can have 10 times the lifting capacity they had 30 years ago, plus a significantly improved outreach. They have benefitted enormously from the latest developments in high-strength steel, which means that designers do not need to compromise on meeting specs, requirements, strength or safety. Strenx® high-strength steel in mobile crane applications puts the designer in charge.

Strenx® steel is used in booms, outriggers and chassis across a wide range of mobile cranes, including truck-mounted, crawler, rough-terrain, floating, all-terrain, and telescopic handlers. With its carefully developed chemical composition, Strenx® steel makes stronger and tougher welds possible, resulting in safer cranes that lift more and higher with Strenx® guarantees.



1. Strenx® 960, 1100 and 1300 High-strength steels

2. Strenx® 960 and 1100 High-strength steels